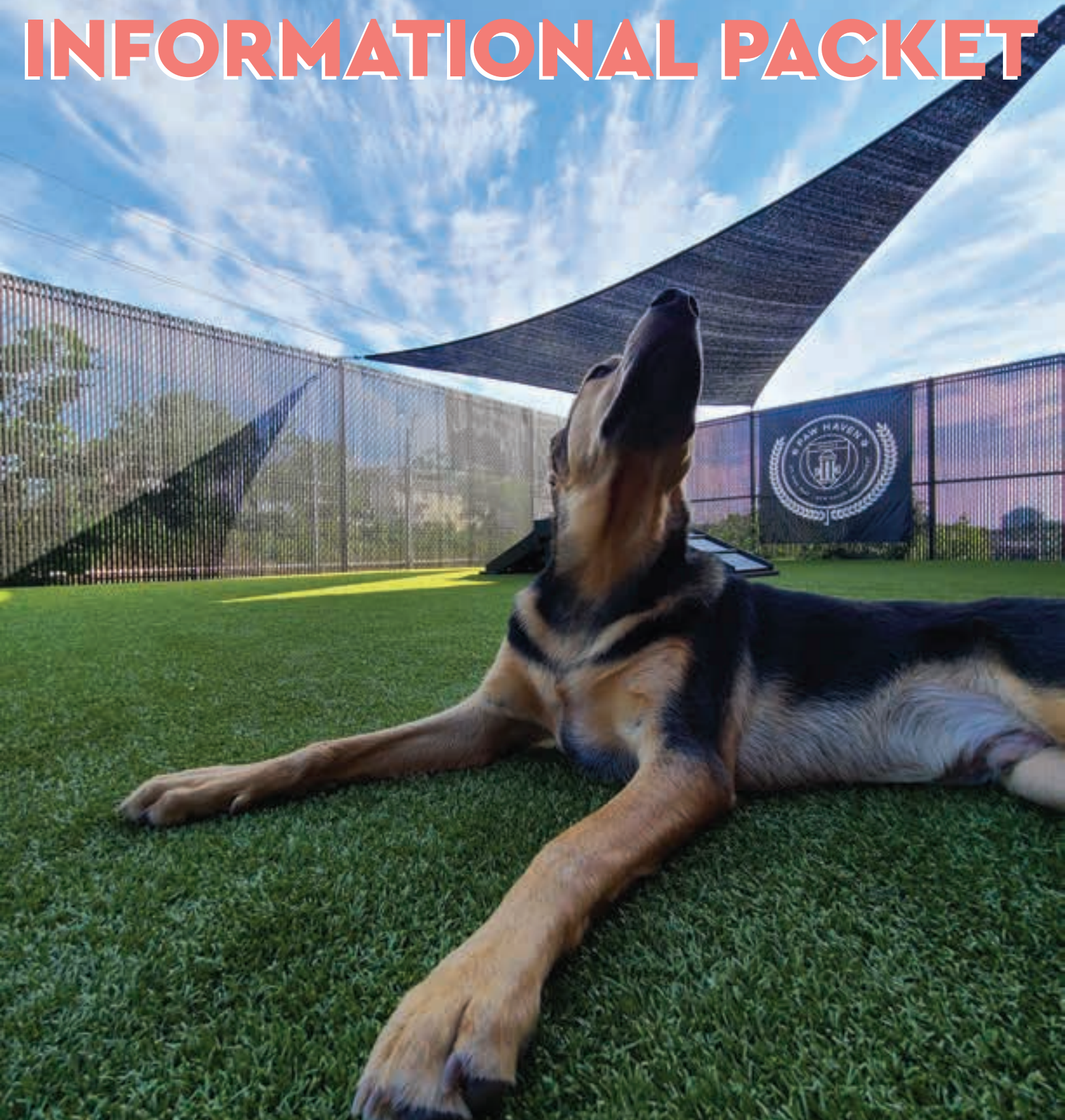


PAW HAVEN

INFORMATIONAL PACKET



[Services](#)

[Campus & Dorms](#)

[Our Team](#)

[FAQ](#)

OUR SERVICES

The Paw Haven difference is Ivy League care for your canine or feline student of life. Your pet's well-being is our first and foremost priority. That's why we have a number of safety protocols in place to protect your furry family member. Paw Haven is designed to present pets and their owners with an unbeatable experience. Our professionally trained, energetic, and paw-loving team is one of the biggest points of differentiation among our competitors. Our staff is Pet CPR and First Aid Certified, and our general manager is one of two Certified Professional Animal Care Operators (CPACO) in the state of Connecticut.

Doggy Daycare

Doggy Daycare ½ Day
Doggy Daycare Full Day
Additional dog discount

Price

\$25
\$39
20% off all services



Packages

Unlimited Monthly
20 Day Play
10 Day Play
5 Day Play Interview Offer
5 Night Stay – Pack Play
5 Night Stay – Individual Enrichment

Price

\$500
\$550
\$300
\$125
\$275
\$370

Daily Value

\$17
\$27
\$30
\$25
\$55
\$74

Pet Boarding

Standard Boarding – Pack Play
Standard Boarding – Individual Enrichment
Luxury Boarding – Pack Play
Luxury Boarding – Individual Enrichment
Cat Overnight
Additional dog discount

Price

\$59
\$79
\$79
\$99
\$35
20% off

So Fresh & So Clean

Bath & Blowout
Deluxe Bath & Blowout
Nail Trim
Teeth Brushing

Price

S, \$20 / M, \$25 / L, \$30 / XL, \$35
S, \$30 / M, \$35 / L, \$40 / XL, \$45
\$10
\$10



LEARN MORE AT PAWHAVENCT.COM/SERVICES

ADDITIONAL SERVICES

Customize your pet's experience!

Peanut Butter Kong: \$4

Treat your pup to a PB kong during their daycare or boarding stay.

Nighttime Snuggles: \$8

10 minutes of one-on-one belly rubs and snuggles will help put your furball right to sleep.

One-on-One Fetch Lane: 15 mins \$10 / 30 mins: \$20

For the pup who can't get enough of the age-old game of fetch – don't stop retrieving! One of our Pack Leaders will give your pooch undivided attention and lots of throws in our fetch lane.

Bath & Blowout: S, \$20 / M, \$25 / L, \$30 / XL, \$35

Your pup plays hard at Paw Haven so it's understandable they might not be as sweet smelling as when you dropped them off. Add on a grooming service to their daycare or boarding stay featuring a shampoo, brush, and a blowdry.

Deluxe Bath & Blowout: S, \$30 / M, \$35 / L, \$40 / XL, \$45

For the higher maintenance pooch, opt for the Deluxe Bath & Blowout service, featuring a shampoo, deep conditioner, brush, blowout and nail trim. Your pup will leave humming to Lizzo – feeling good as hell!

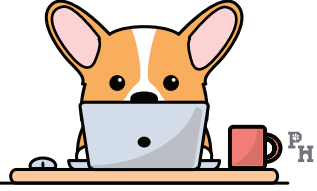
Nail Trim: \$10

Teeth Brushing: \$10



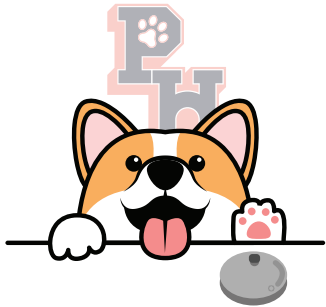
LET'S GET STARTED

Ready for woofing and wagging? Booking your pet's reservation for daycare and boarding is quick and easy!



Tell Us About Yourself & Your Pet(s)

- 🐾 Create an account at www.pawhavenct.com/book-now
- 🐾 Upload your pet's vaccination records directly to their account or email them to ThePack@PawHavenCT.com
- 🐾 To see which vaccinations we require go to www.pawhavenct.com/faq



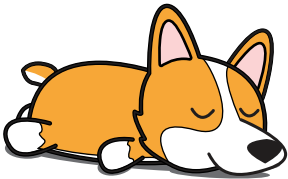
Schedule Your Pup's Admissions Interview

- 🐾 Email ThePack@PawHavenCT.com
- 🐾 Call us at [203-535-0453](tel:203-535-0453)
- 🐾 Expect your pup to spend a minimum of 3 hours and a max of 10 hours at Paw Haven on their interview day.



Learn the Ropes

- 🐾 The admissions interview and temperament evaluation will determine whether your pup is a candidate for our open play doggy daycare.
- 🐾 Under watchful (and playful) eyes of our Paw Haven staff, we'll make sure your pup is comfortable being handled by our staff and we'll monitor how your pup interacts with other dogs in the play yard.



A Full Report From the Team

- 🐾 A Pack Leader will share details with you about your pup's day and whether they are a candidate for open play daycare.
- 🐾 Once the interview process is complete you are free to book services for your pup.
- 🐾 Go to www.pawhavenct.com/book-now or call us at [203-535-0453](tel:203-535-0453) to make a reservation.

WAG SOON!

LEARN MORE AT PAWHAVENCT.COM/BOOK-NOW



CAMPUS AND DORMS

Paw Haven is the newest and largest indoor/outdoor pet daycare and boarding facility in New England. With nearly 15,000 square feet of play space we trust that you and your furry friend will deem this a new found haven for paws and all.

Four Large Individual Play Yards

Paw Haven features 4 large, individual play yards. These yards give us the opportunity to group dogs according to their size and or temperament.

Outdoor Play Area

Our play yards feature large garage doors for direct access to our 3000 square foot outdoor yard where dogs can romp in the sun, take a dip in the bone bath, get some exercise on our dog friendly obstacles, or chill in the shade.

Climate-controlled Facility With State-of-the-art HVAC System

Paw Haven features a unique and proven HVAC system called AtmosAir. AtmosAir's air purification system eliminates mold, controls bacteria and limits the spread of airborne viruses, all while keeping our Paw Haven spaces at a comfortable temperature.

Industry-best K9 Dog Turf

Paw Haven features K9 Dog Turf, a synthetic grass designed specifically for dogs. With its exclusive flow-through backing, short dense blade structure, and antimicrobial protection, K9Grass offers a cleaner and safer environment for pets.



Abundant natural light in play areas

Direct outdoor access from play yards

Veterinary-grade antimicrobial flooring throughout

Fully climate-controlled facility including a state-of-the-art HVAC system

Play obstacles for every level of athletic dog

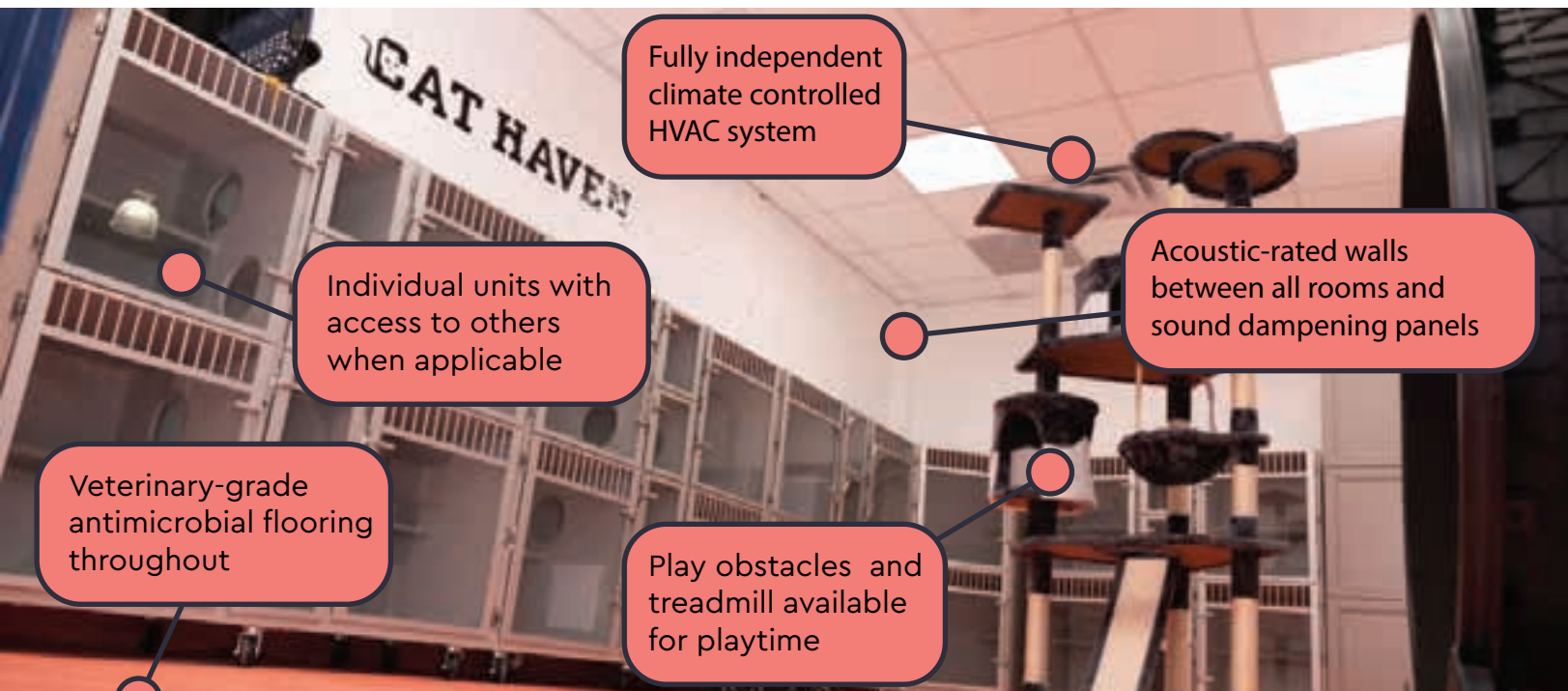
Acoustic-rated walls between all rooms and sound dampening panels

LEARN MORE AT PAWHAVENCT.COM/CAMPUSDORMS

CAT HAVEN FELINE FACILITIES

When the dogs are away, the cats will play!
Cat Haven features 23 roomy cat suites away from their canine friends.

Paw Haven has lots of love (and space) for our feline friends too! Our cat condo features a separate HVAC system so that our kitties can't sniff out their canine classmates. The cat condos include individual litter boxes and privacy panels. Each cat gets social time to climb around the cat castle or nuzzle with our staff throughout the day.



LEARN MORE AT PAWHAVENCT.COM/CAMPUSDORMS

OVERNIGHT BOARDING



Leaving your pet is never easy, for you or for them. But pets actually dig the Paw Haven dorm—they get the play, rest, love, treats and socialization all pets crave and deserve. And after a full day of day-care and extra-special attention, they're ready to catch up on some much-needed rest in our climate-controlled boarding area.

STANDARD BOARDING

- 🐾 Paw Haven features top-of-the-line boarding enclosures for pups who choose to spend the night with us. Our boarding enclosures are made with high quality materials to create a comfortable, safe space for your pet.
- 🐾 Standard boarding spaces come in three different sizes to accommodate your pup. Each boarding enclosure features a comfy dog bed.
- 🐾 Bringing sibling pups in for an overnight stay? Your pooches can enjoy their night together in our conjoining boarding runs.
- 🐾 Our facility is deliberately designed to help our visiting pets stay calm, peaceful, and playful during their visit. Our "fear-free" facility makes use of muted animal-friendly colors, privacy panels, soothing music, and dog and cat-specific pheromones to help your pet have the best stay possible.

LUXURY BOARDING

- 🐾 Our luxury boarding offers upgraded open-air luxury suites complete with memory foam beds.
- 🐾 Our luxury boarding suites feature private webcam access so you can snoop on your furry friend while they're catching some shuteye!

A DAY IN THE LIFE

6:30 am wakeup call, bathroom break, morning stretch



Breakfast in the dorm followed by digestion time



10 hours of puppy playtime with the pack



Dinner in the dorm, followed by digestion time



Last romp, bathroom break, cuddles



7 PM lights out



LEARN MORE AT [PAWHAVENCT.COM/CAMPUSDORMS](https://pawhavenct.com/campusdorms)

WHAT TO EXPECT

How will my dog spend his/her day while at daycare?

- 🐾 Your dog will spend the day exercising and socializing with their friends – dogs and humans alike – in a supervised, clean, safe, fun environment.
- 🐾 Our 15,000 sq. foot climate-controlled facility provides your dog with the opportunity to romp in both our indoor and outdoor play yards.
- 🐾 For any dog that needs a rest, we will provide a safe and quiet area for them to take a nap.
- 🐾 If you prefer to not leave things to the imagination, simply pop onto PawHavenCt.com and take a peek at your pup on our play yard webcams!
Keep an eye out for daily report cards so you can keep track of your pup's daily activities!

Will my older dog enjoy participating in daycare?

- 🐾 Many older dogs enjoy socializing just as much as their younger friends. Some do not, but we offer alternate services to still be able to give your pup the care they need.

Why is my dog so hungry and sleepy after s/he comes home?

- 🐾 A tired dog is the sign of a good day! It means your pup has been socializing and getting the exercise they need.

Can my doggie get a "boo-boo?"

- 🐾 Pups use their bodies, teeth, and claws to play and interact with each other. While they are diligently supervised in the yards and we do our best to keep all dogs safe, marks and scratches can happen. If we notice something new, we will notify you.

Can my pup get sick?

- 🐾 Doggy daycare is much like daycare for a child – they play, learn, socialize, and have fun with their friends. Unfortunately, daycare can sometimes lead to illness in certain members of the group. Since dogs cannot tell us when they don't feel well, we may not know they are "sick" until they show physical signs such as sneezing, coughing or diarrhea. We do everything in our power to prevent illnesses in our facility and if we notice any symptoms in your pup we will let you know ASAP. We appreciate if you notice your dog is not feeling well, please notify us and keep them home to prevent the spread of any illness.

What are your drop off and pick up times?

- 🐾 **For daycare:** You can drop off your pooch for daycare from **6:30am – 11am** every day, and pick up is from **1pm-7pm**.
- 🐾 **For boarding:** You can drop off your pooch for daycare from **7am – 11am** every day, and pick up is from **1pm-4pm**.

WAG SOON!



Contact

thepack@pawhavenct.com
203-535-0453

Hours

6:30-11am and 1-7 PM,
Seven days a week.

Address

1175 State Street, Suite 241
New Haven, CT 06511